

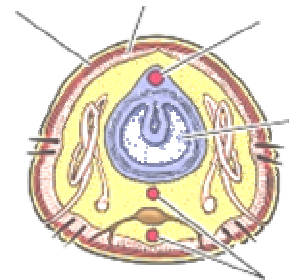
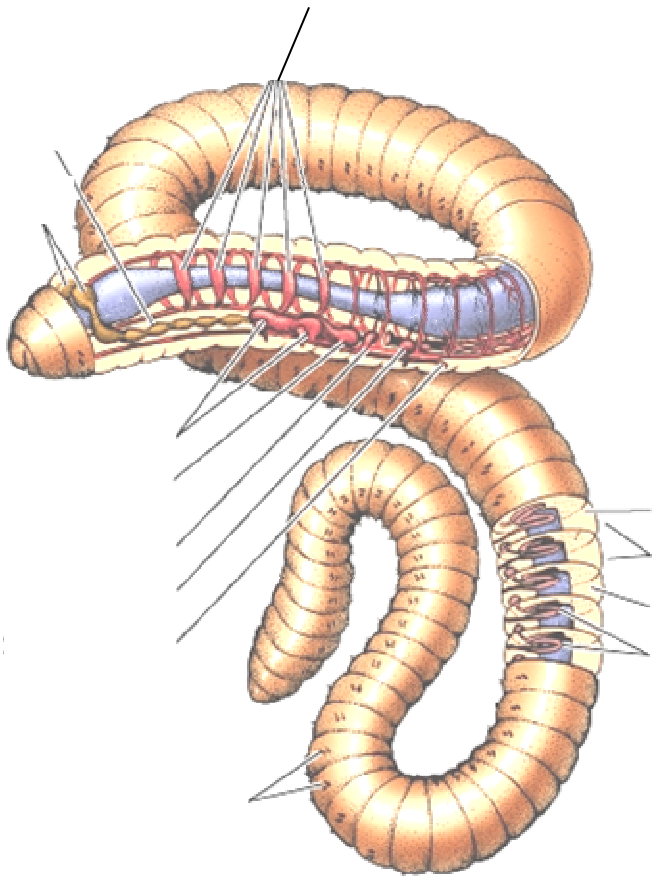
Name _____

Annelid Investigation

Station 1

Anatomy

LABEL and **COLOR** the drawings below. Use the key at your station to help you



Cross section

Station 2

Oxygen

1. After you added the water to the gravel, what happened? What did you see?
2. What is causing this to happen?
3. If you added water to soil, what do you think you would see?
4. When it rains outside, we see more worms on the ground and on the sidewalk. Why?
5. Where does an earthworm get its oxygen?

Station 3
Chemicals

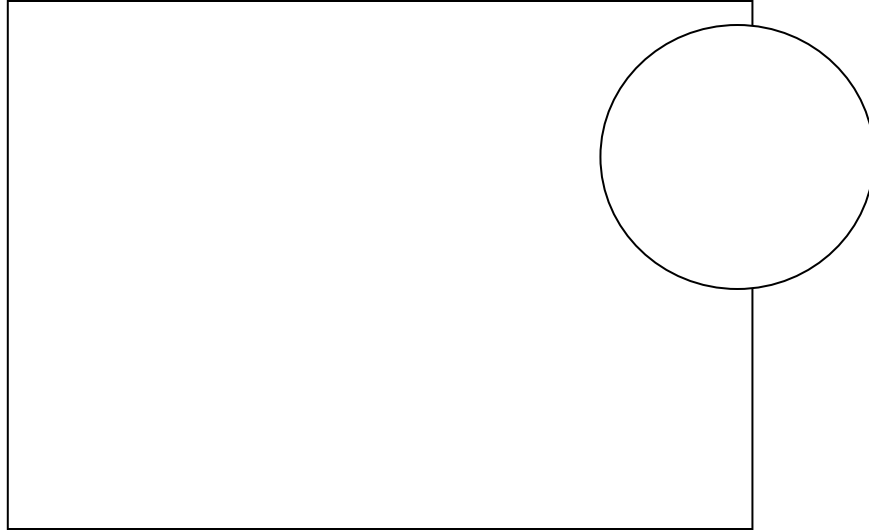
**DO NOT TOUCH THE EARTHWORM OR THE TRAY
WITH THE ACETONE (NAIL POLISH REMOVER)!!!!**

1. Describe the procedure you used in this part of the lab.
2. What happens when you approach the head of the earthworm with the cottonball?
3. What happens when you approach the tail of the earthworm?
4. What happens when you approach the middle of the earthworm?
5. Where do you think the sensory organs are in the earthworm?

Station 4

Blackworm comparison (Note: Use your notes and book to help you.)

1. DRAW and LABEL the picture of the blackworm as it appears on page 34 in your book.



2. One or both ends of some blackworms appear lighter in color than the rest of their bodies. Explain why this is so.

3. Why do blackworms make some of their unusual movements?

4. Use the Venn diagram to summarize the similarities and differences between a blackworm and the common earthworm.

